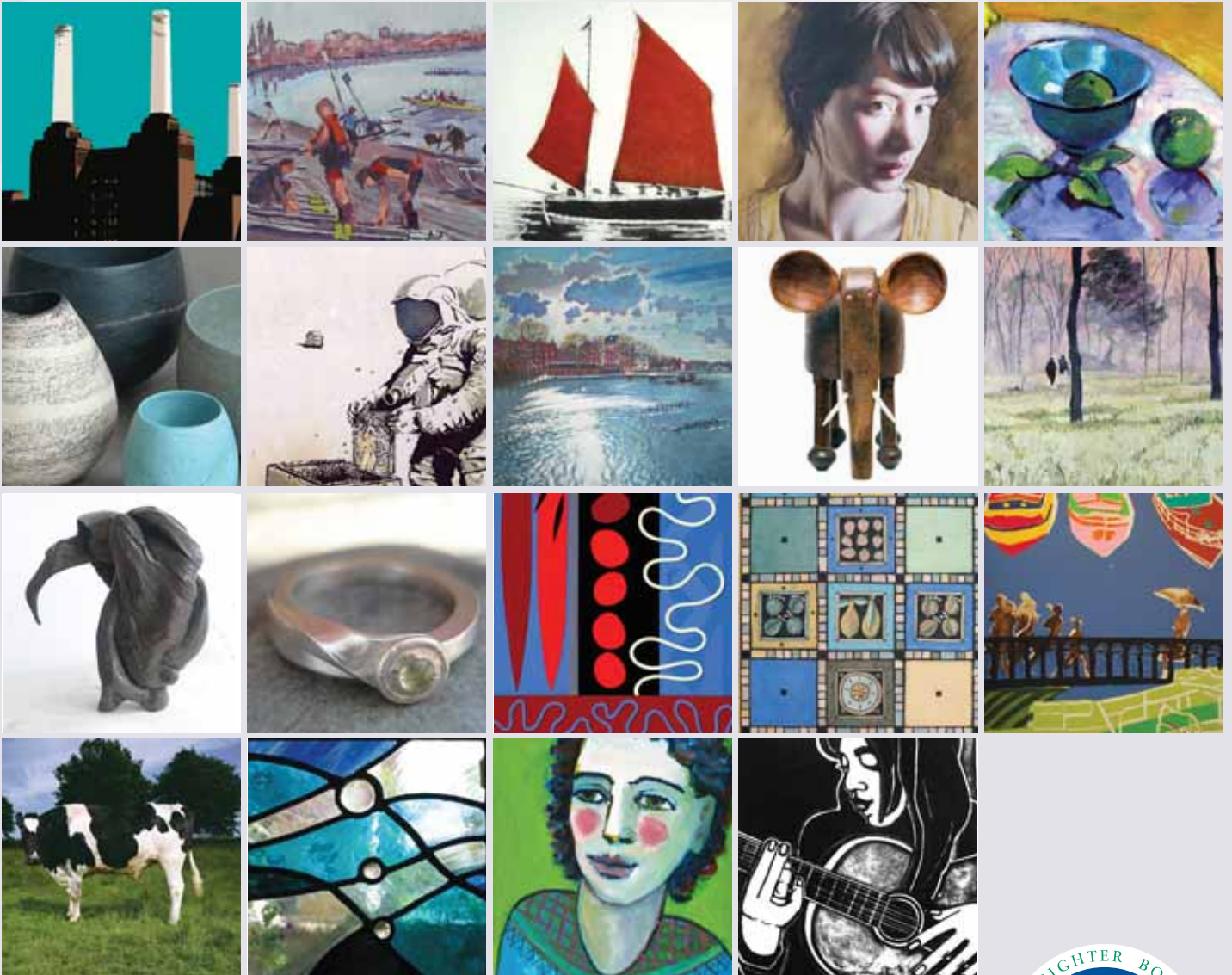


# Wandsworth ARTISTS' Open House

2010

2-3 October  
9-10 October



# Wandsworth ARTISTS' Open House

A purple splatter graphic containing the year '2010' in white, with two smaller purple dots to its right.

**Saturday 2 – Sunday 3 October**  
**Saturday 9 – Sunday 10 October**  
**11am to 6pm**

The best thing about Artists' Open House is the chance to meet artists in an informal setting. It allows you to understand and appreciate the art they make in new and surprising ways. It can be a real magical mystery tour and with the fantastic range of artworks on show in Wandsworth this year, you cannot fail to be engaged and delighted by the experience. From old clock factories, working studios, garden sheds and front rooms - we have around 200 artists waiting to give you a warm reception and a great day out.


On the centre pages you will find a map showing where the open houses are. We recommend that you take an A-Z with you as well. This map also shows places where other visual arts activities are taking place, including Big Draw events. For more information about these events see the Wandsworth Arts Edition newspaper.

To help you plot your trail, we have two exciting new opportunities this year. On page 9 you can find out about an interactive google map project that local school children have prepared for the event under professional guidance. Or you can join a group walk in the Wandsworth Common and Tooting Bec areas - see page 11 for more information. You can also pick up more detailed maps of local area trails at individual open houses.

Not all the venues are open on both weekends:

**\* Only open the first weekend**

**\*\* Open both weekends**

 This symbol next to a listing indicates steps, stairs or limited access. Artists are opening their homes to take part in this event and so we cannot guarantee that every venue is fully accessible.

Artists' Open House is organised by the Arts Team at Wandsworth Council in conjunction with an artists' steering committee. For more information contact (020) 8871 8711 or [arts@wandsworth.gov.uk](mailto:arts@wandsworth.gov.uk)

Wandsworth Council strives to ensure that the information provided is correct at the time of going to print and cannot be held responsible for last minute changes to studios or the project.

To download more copies of this guide visit [www.wandsworth.gov.uk/arts](http://www.wandsworth.gov.uk/arts)

---

Proudly supported by

A large, bold, black 'SW' logo representing Wandsworth Council.

## A. Putney Area Group Show

2-3 and 9-10 October

Putney School of Art and Design, Oxford Road, SW15 2LQ

Open Mon-Sat 10am-5pm

A taster of artworks to be found on show at open houses in the Putney area.

### 1. Ben Speedy

\*\* 14 Innes Gardens, SW15 3AB

Figure drawings and paintings from life, in pencil, charcoal, watercolour and oil.

[benspeedy@gmail.com](mailto:benspeedy@gmail.com)

**HOME IS WHERE THE ART IS**



### 2. Alan Smart, Maggie Laing

\*\* 21 Huntingfield Road, SW15 5HE

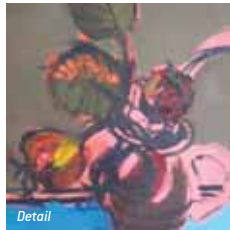
Still life as landscape - paintings exploring how seasons change everyday environments.

Silver jewellery with semi-precious stones and natural materials in coloured resins.

[chrominska@fsmail.net](mailto:chrominska@fsmail.net) • (020) 8878 5083

[magslaing@googlemail.com](mailto:magslaing@googlemail.com) •

(020) 8877 0907



### 3. Elizabeth Macdonnell

\*\* 17 Malbrook Road, SW15 6UH

Colourful and energetic paintings in acrylic on paper, expressing a deep love of landscape and ideas inspired by poetry and music.



### 4. Charles Penny

\*\* 70 Erpingham Road, SW15 1BG

New and recent oils, watercolours, drawings and cards.



### 5. Ken Cox, Margot Cox

\*\* 23 Danemere Street, SW15 1LT

Landscapes and figures in a semi-abstract styles with a lively sense of movement.

Drawings and screenprints and examples of editorial illustration.

[www.kencox.co.uk](http://www.kencox.co.uk) • (020) 8788 0786



### 6. Jo Bowen

\*\* 133 Lower Richmond Road, SW15 1EZ

Visit Jo's new studio and see large contemporary oils and stunning charcoals and drawings of the Thames and Putney.

[www.jobowen.co.uk](http://www.jobowen.co.uk) • 07885 193 993



### 7. Pia Rosling, Maria Lind

\*\* 3 Biggs Row, SW15 1ED

Welcome to a bright and beautiful collection of naive, colourful oil paintings and mixed media photography and prints.

[www.miadesignstudio.co.uk](http://www.miadesignstudio.co.uk)

[www.pirodesign.co.uk](http://www.pirodesign.co.uk) • 07834 078 929



### 8. David Giffard

\*\* 33 Charlwood Road, SW15 1QA

Oil paintings and watercolours both landscape and figurative, including the Thames, Richmond Park and seascapes.



### 9. Gurley, Jayson Lilley, Millie McCullam, Mark Stonehouse

\*\* 1 Charlwood Road, SW15 1PJ

*Home is where the art is...*

A wide selection of contemporary art in a variety of mediums by four up and coming local artists.

On show in the house are unique works on canvas in oil and acrylic, along with watercolours. The house is also home to limited edition lino prints, monoprints, etchings, photography, works on paper and textiles.

On show in the garden are specially commissioned murals, a video installation and sculptures.

This is a great opportunity to view some outstanding art in a quirky domestic setting. Whether you're buying or just looking, you'll find the vibrant atmosphere inspiring. Tea will be served all day and as ever Gurley's homemade fairy cakes!

[www.thegurley.co.uk](http://www.thegurley.co.uk)

[www.jaysonlilley.co.uk](http://www.jaysonlilley.co.uk)

[www.milliemccallum.co.uk](http://www.milliemccallum.co.uk)



### 10. Francesca James, Lorrie Cannon and friends

\*\* 4 Carlyle Place, SW15 1NQ

A vibrant mix of abstract, acrylic paintings, still life drawings, screen prints and photography.

Teas and delicious cakes by Pip Taylor.

[lollcannon@hotmail.co.uk](mailto:lollcannon@hotmail.co.uk) • 07939 521 538

[francescajames08@yahoo.co.uk](mailto:francescajames08@yahoo.co.uk)



### 11. Gabriella, Joanna and Julianna Franchetti

\*\* 54 Lacy Road, SW15 1NL

Oil paintings, watercolours, etchings and prints of local scenes and sea-scapes.

Jewellery and stunning nude photographs.

[www.juliannafranchetti.co.uk](http://www.juliannafranchetti.co.uk)

(020) 8789 3643



### 12. Margaret Knott, Janet Mays, Rona Bebb

\*\* 56 Lacy Road, SW15 1NL

Oil, gouache and watercolour paintings, etchings and sale of early work by Margaret and Janet. Ear-rings, chunky necklaces and bracelets by Rona.

(020) 8789 3030



### 13. Helen, Andrew and Hannah Fickling, Sophie Marsham, Sam Hogg and friends

\*\* 14 Stratford Grove, SW15 1NU

A creative and inspirational mix of fine art photography, sculpture, paintings, fashionable jewellery, vintage soft furnishings and much more.



**14. Jocelyn Peachey, Isobel Peachey, Nick Ozanne**

\*\* 22 Norroy Road, SW15 1PF

Oil portraiture and studies by 2009 BP Travel Award Winner Isobel. Abstract watercolours and landscapes by Jocelyn. Handwoven scarves in natural fibres by Nick.  
[www.isobelpeachey.co.uk](http://www.isobelpeachey.co.uk)  
[www.letoriadne.com](http://www.letoriadne.com)



**15. Dick Bates**

\*\* Flat E Estate House,

225-231 Upper Richmond Road, SW15 6SJ  
Watercolours of local Putney scenes and Richmond Park painted on location.  
(020) 8789 3924



**16. Sally Scott, Prue Cooper, Gilbert Whyman**

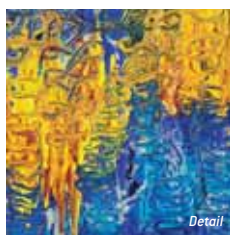
\*\* The Cottage, Cambalt Road, SW15 6EW  
Vibrant paintings and lithographs. Decorative ceramics for celebration and use. Recycled metal sculptures in the garden.  
[www.sallyscottartist.co.uk](http://www.sallyscottartist.co.uk)  
[www.pruecooper.co.uk](http://www.pruecooper.co.uk)  
[www.gilbertwhyman.co.uk](http://www.gilbertwhyman.co.uk)



**17. Larissa Exalto**

\*\* 29 Fairburn Court, 11 St John's Avenue, SW15 2AU

The Colours of Life - a collection of twenty oil paintings in abstract expressionist style, inspired by nature, the outside world and our emotional response.  
[www.larissaexalto.com](http://www.larissaexalto.com) • 079112 509 600



**18. Anna Dudley Neill**

\*\* 10 St Ronans (entrance off Putney Heath Lane), 63-65 Putney Hill, SW15 3NR  
A selection of paintings including watercolour landscapes, abstracts and oils. Anna is a member of the Royal Institute of Painters in watercolours.



**19. Nigel Murray**

\* 22 Lytton Grove, SW15 2HA

A lively mix of semi-abstract and figurative paintings, drawings and prints of coastal and woodland scenes.  
[nigel.lesleymurray@tiscali.co.uk](mailto:nigel.lesleymurray@tiscali.co.uk)



**20a. Sheila Roe**

\*\* 21 Montserrat Road, SW15 2LD

Lively and witty mixed-media paintings, drawings and prints capturing our times, city life and quirky suburbia.  
Open at other times by appointment.  
[sheilaroe47@hotmail.com](mailto:sheilaroe47@hotmail.com) • 07891 037 896



**20b. Kate Pellegrini**

21 Montserrat Road, SW15 2LD

\*\* Using drawings and photographs or poetry imagery to create abstracted townscapes, landscapes, interiors & figures in collage, watercolour, oil and acrylic paintings.  
Open at other times by appointment.  
[www.katepellegrini.com](http://www.katepellegrini.com) • 07772 179 160



**21. Sophie Cole**

\* Flat 1, 47 Monserrat Road, SW15 2LE

Expressive and delicate figurative work in a range of media. Land and seascapes in oil moving between peaceful and dramatic.  
[www.sophiecole.co.uk](http://www.sophiecole.co.uk)



**22. Carole Irwin, Finna Ayres, Petra Bradley**

\* 29 Oxford Road, SW15 2LH

Slab built, carved and wheel thrown ceramics. Vibrant landscape and still life paintings in oil and pastel. Vintage recycled and screen printed textiles.  
[carolemary@talktalk.net](mailto:carolemary@talktalk.net)



**23. Allan Manham**

\*\* The Studio, 35 Oxford Road, SW15 2LH

Naked pots. Handbuilt, unglazed stoneware of varying sizes, some suitable for outside use. Also a selection of smoked fired pots.  
[www.manham.net](http://www.manham.net) • 07843 375 371



**24a. Ian Lettice**

\*\* Old Air Raid Shelter, (to right of Scout Hall), 42 Oxford Road, SW15 2LQ

Figurative painter in oils. Local views, river scenes, and still life paintings.  
[www.ianlettice.com](http://www.ianlettice.com) • 07967 481 429



**24b. Thomas Whetnall**

\*\* Old Air Raid Shelter, (to right of Scout Hall), 42 Oxford Road, SW15 2LQ

Delicately surreal etchings and ink drawings by a practicing illustrator. Small, tactile images about science, the inner landscape and stuffed toys.  
[www.thomaswhetnall.blogspot.com](http://www.thomaswhetnall.blogspot.com)



**25. Sally Booth**

\* Hurlingham Yacht Club, 43a Deodar Road, SW15 2NA

Panoramic landscapes, drawings and paintings made on location, sometimes using unconventional materials.  
[www.sallybooth.co.uk](http://www.sallybooth.co.uk) • 07921 809 688



**26. Jenny Alexander**

\*\* 83 Putney Bridge Road, SW15 2PA

Sculptures, mosaic mirrors, ceramic and textile jewellery, knitted and felted textiles as scarves, cushions, throws, rugs and bags.  
[jenny.alexander@btinternet.com](mailto:jenny.alexander@btinternet.com)  
(020) 8870 5069



**27. Sim Hock Neoh**

\*\* 64 Schubert Road, SW15 2QS

Large collection of oil and watercolour paintings of local scenes [Putney, Battersea and Central London]. Commissions taken for buildings, special locations and portraits.  
(020) 8874 5158  
[www.simhock.co.uk](http://www.simhock.co.uk)



### B. The Hub

Studio One Gallery, Collective Studios,  
9 Broomhill Road, SW18 4JQ

11am-6pm. Saturday 2, Sunday 3 and  
Saturday 9, Sunday 10 October.

An exhibition of works by the Southfields  
artists' network, exploring works to be found  
on the Southfields area trail.

Charlie Day: 07966 987 672



### 28. Collective Studios

\*\* 9 Broomhill Road, SW18 4JQ

Come and meet 45 emerging artists at work in  
their studios.

colectivestudios@googlemail.com

Charlie Day: 07966 987 672

collective|studios

### 29. Anna Loveday Minshall

\*\* 15 Amerland Road, SW18 1PX

Paintings that take the colours, shapes and  
symbols of the Cornish landscape as a  
starting point for narrative - with inspiration  
from Heron, Hitchens, Lanyon and Hodgkin.

www.annalovedayminshall.com

[020] 8877 0361



### 30. Jennifer Hollingdale

\*\* 20 Jephtha Road, SW18 1QH

Screen prints, stitched textiles including quilts,  
cushions, framed pieces and assemblages,  
some using vintage fabrics. Memorabilia and  
found objects.

hollingdale12@btinternet.com

[020] 8874 6314



### 31. Slavica Struthers-Kennedy

\*\* 51 Melrose Road, SW18 1LX

Quilter turned jeweller! Slavica works in silver,  
semi-precious stones and beads. Her elegant  
and unique designs are truly inspired.

slavica@melroseroad.net • [020] 8874 1633



### 32. Julia Durrant, Anna Seaborn, Claude Smith, Zora Stanic

\*\* 53 Granville Road, SW18 5SE

Hand-drawn nostalgic porcelain, exuberant  
acrylic and mixed media still-lives and  
landscapes, beautifully crafted modern takes  
on Victorian decoupage and intricate wall-  
pieces with paintings on Croatian stone.

www.juliadurrant.co.uk • [020] 8874 3676



### 33. Cliff Pearcey

\*\* 1 Granville Road, SW18 5SB

Wall pieces, small pieces and tall pieces - all  
made from found objects. Familiar shapes given  
a new lease of life. Perceptive, witty and clever.

www.cliffpearcey.com • 07973 862 349



### 34. Rajmohani aka Liz Mundle

\*\* 250 Merton Road, SW18 5JQ, next to  
Standon Road

"Memories are like dreams, a reflection of the  
past." Figurative work using mixed media  
including paint, collage, photography and  
printmaking.

www.rajmohanimundle.co.uk • 07957 486 725



### 35. Olga Brown

\*\* 19 Smeaton Road, SW18 5JJ

Impressionistic oil paintings that capture the  
mood, light and busy atmosphere of London,  
as well as dynamic figurative compositions.

www.olgabrown-art.com



### 35b. Stuart Brown

\*\* 19 Smeaton Road, SW18 5JJ

Edifice - a series of real photographs of urban  
images that challenge our senses with an  
unexpected interplay of light and shapes.

www.stuartbrownphotography.com



### 36. Chris Payne, Lindy Barletta, Deana Lee

\*\* 203 Wimbledon Park Road, SW18 5RH

Three artists working in clay, producing glazed  
stone and earthenware pottery and beautiful  
smoke-fired sculptural ceramics.

www.chrispypottery.com

www.sheenpottery.co.uk • 07887 483 275

www.deanaleeceramics.com



### 37. Briony Marshall

\*\* Salt and Pepper, 177 Replingham Road,  
SW18 5LY

Following a three month residency in a foundry  
in Italy, Briony will be showing new bronzes, wax  
and pewter experiments and other sculptures  
inspired by science and climate change. Also  
portrait commissions and baby castings.

www.briony.com



### 38. Tony Gant, Janet Gant

\*\* 53 Southdean Gardens, SW19 6NT

Stoneware mugs, jugs, bowls, dishes, plates and  
Green Man vases.

www.tonygantpottery.com

[020] 8789 4518



### 39. Jo Gibson, Lucy Gibson, Paulene Cattle, Kay Whiteman

\*\* 117 Astonville Street, SW18 5AQ

Bespoke silver jewellery, textiles, prints,  
photographs, greetings cards, watercolour  
cartoons and lively figurative drawings.

www.lucygibsonjewellery.co.uk

[020] 8874 7790



southfields Gallery

Paintings - Ceramics - Prints - Sculptures - Photography

223 Wimbledon Park Road, London SW18 5RH

e: info@southfieldsgallery.com t: 07947 675059

www.southfieldsgallery.com

OPENING HOURS - Mon - Fri - 11.00am - 5.00pm • Sat - Sun - 10.30am - 5.30pm

**ARTISTS' OPENHOUSE**  
**9 DAY EXHIBITION OF WANDSWORTH ARTISTS**  
**Sat 2nd October - Sun 10th October 2010**

Artists:- Ann Bowles • Andrea Lelia Brown • Chander Kanta Bhasin • Darryn Eggleton  
Dairo Vargas • Lumina Dyer • Maxeen Kim • Pape Sarr • Richard Fuller

Southfields Gallery, 223 Wimbledon Park Road, Southfields, London SW18 5RH - nearest underground station - Southfields

We strongly recommend that you use a London street map in conjunction with this guide.

Not all the places are open on both weekends. Please check the \* on each listing which indicates when studios are open.

\* Only open the first weekend

\*\* Open both weekends

Detailed maps of local area trails can be picked up at individual open houses.

Venues for other events and activities, including Big Draw, as detailed in the Wandsworth Arts Edition newspaper.

- A. Putney School of Art and Design, Oxford Road, SW15 2LQ
- B. Collective Studios, Broomhill Road, SW18 4JQ
- C. Wandsworth Museum, 38 West Hill, SW18 1RZ
- D. The Clock Factory, 11 Riverside Road, SW17 0BA
- E. Wimbledon Common, nr Windmill Car Park, SW19 5NR
- F. Thrive Herb Garden, Battersea Park, SW11 4NJ
- G. Pump House Gallery, Battersea Garden, SW11 4NJ
- H. Coronation Gardens, Pirbright Road, Southfields, SW18
- I. Alton Activity Centre, Ellisfield Drive, SW15 4DR
- J. RCA, Moving Image Studio, 1-11 Howie Street, SW11 4A
- K. Crumpet, 66 Northcote Road, SW11 6QL
- L. Sprout Gallery, 74 Moyser Road, SW16 6SQ
- M. IPSUS Marketing Suite, corner of Hardwicks Way and Buckhold Road, SW18 4AG
- N. The Wand Youth Club, 30 Petworth Street, SW11 4QW
- O. The Old Sweet Shop, 11 Brookwood Road, SW18 5BL
- P. Balham Library Hall, 16 Ramsden Road, SW12 8QY

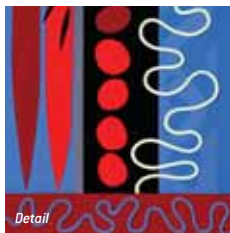





**40. Diana Wackerbarth, Carol Stubbington and friends.**

**\*\***  The Clock Factory, Unit 11 Riverside Road, SW17 0BA

*TimeLines* - Seven artists in an exciting new venue. Painting, prints, photography, ceramics, jewellery, sculpture. Make your own clock: Drop-in workshops, all ages, daily, £5. [www.timelinesart.co.uk](http://www.timelinesart.co.uk)




**41. Riverside Artists**

**\*\***  A130/131 Riverside Business Centre, Bendon Valley, SW18 4LZ

Seven artists showing an exciting range of abstract, figurative and landscape pictures in all media. Prices from £30. Commissions welcomed. [www.riversideartists.com](http://www.riversideartists.com) [www.joannelast.co.uk](http://www.joannelast.co.uk)



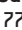
**42. Tiina Kenward, Michelangelo Bonitatibus, Jacques Jean**

**\*\***  B241 Riverside Business Centre, Bendon Valley, SW18 4LZ

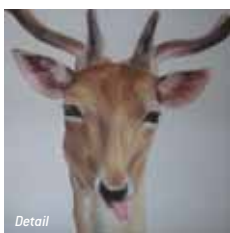
Hand-crafted jewellery, ceramic forms and sculpture. Antiquity twisted, eroded landscapes and talking heads. [www.emmeb.moonfruit.com](http://www.emmeb.moonfruit.com) • 07590 761 188




**43. Sally Spenceley**

**\*\***  77 Twilley Street, SW18 4NU

A variety of paintings inspired by the natural world. 07971 021 143



**44. Matthew Mounsey**

**\*\***  16 Whitecliff House, Vermont Road, SW18 2LH

Erotic and prehistoric landscapes and more. 07941 355 450




**45. Julia Wilson, Carole Hodgson, Kerstin Howard**

**\*\***  R/0 17-23 Barmouth Road, SW18 2DT

Abstract paintings that explore colour form and light, sculpture and works on paper about journeys, and forged gold and silver jewellery.



**46. Madeleine Lynch**

**\***  32 Fairfield Drive, Wandsworth Town, SW18 1DL

Bold drawings on paper in black, white and colour oil bar. Abstract and figurative. [www.madeleinelynch.co.uk](http://www.madeleinelynch.co.uk) • 07532 474 196



**47. Wendy Hallam, Patrick Warren, David Sharp, Susan Derbyshire**

**\*\***  80 Melody Road, SW18 2QG

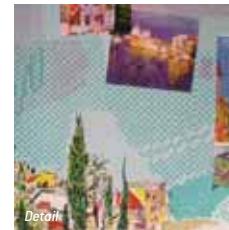
Paintings, glass with mixed media, drawings, etchings, photographs and sculpture. [wendyhallam@aol.com](mailto:wendyhallam@aol.com) • (020) 8870 2820 [artsharp@fsmail.net](mailto:artsharp@fsmail.net) • (020) 7228 9904 [patmwarren@gmail.com](mailto:patmwarren@gmail.com) • 07918 676 648 [susanderbyshire@hotmail.com](mailto:susanderbyshire@hotmail.com) • 07813573344



**48. Philippa Egerton, Sally Dunnett, Andrzej Maria Borkowski, Inigo Xavier Matas**

**\*\***  38 Acris Street, SW18 2QP

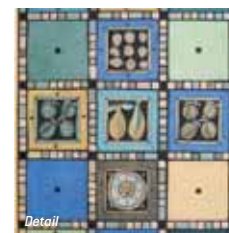
Colourful paintings, screenprints, woodcuts, drawings, paintings on glass, fused glassworks and the infamous Cakeheads. [www.phillippaegerton.co.uk](http://www.phillippaegerton.co.uk) (020) 8870 9947



**49. Joanna Veevers**

**\***  38 Cicada Road, SW18 2NW

Detailed, decorative and original ceramic tiles, mosaic wall pieces, mirrors, jewellery and drawings.




**50. Eileen St. Julian-Bown, Bruce St. Julian-Bown**

**\***  39c Heathfield Road, SW18 2PH

Mixed media paintings of bustling London scenes and award winning silk-screen prints of the local Thames. Photography of evocative landscapes. [bsjb@onetel.com](mailto:bsjb@onetel.com)



**51. Honor Brogan**

**\*\***  12 Westover Road, SW18 2RG

Figurative and landscape drawing and painting - including drawings from rehearsals for 2010 Glyndebourne Opera season. (020) 8874 2828



**52. Debbie Flatt, Patricia Townsend, Diana Stoker**

**\***  95A Earlsfield Road, SW18 3DA

Mixed media paintings, prints and drawings using landscape and memory. Photographic images and montage based on natural forms. Necklaces of beads from around the world. [debbie.flatt@gmail.com](mailto:debbie.flatt@gmail.com)



**53. Steve Lyne, June Lyne**

**\***  59 Earlsfield Road, SW18 3DA

Original photography of wildlife, the famous, architecture and Young's Brewery men at work. Plus stunning handmade jewellery at very reasonable prices. [www.lyne.co.uk](http://www.lyne.co.uk) • 07778 415 140



*We'd like to hear from you!*

We have a Divine Chocolate hamper to give away to the first visitor whose feedback form is pulled out of a hat. Feedback forms can be picked up at open houses, downloaded at [www.wandsworth.gov.uk/arts](http://www.wandsworth.gov.uk/arts) or emailed by return from [arts@wandsworth.gov.uk](mailto:arts@wandsworth.gov.uk).

The prize draw will be made on **Friday 29th October 2010.**

**54. Maureen Sweeney, Barbara Bainbridge, Fiona Reed**

\*\* 13 Burntwood Grange Road, SW18 3JY  
Lyrical landscape paintings and monoprints. London etchings and screenprints. Witty soft sculptures and colourful artefacts – all in a welcoming atmosphere. Print sale.  
(020) 8874 4202



**55. The Carline Art Group**

\*\* 14b Bellevue Road (entrance in Bradley Mews), SW17 7EG  
Paintings and drawings in mixed media by various artists.  
jackienaffah@btopenworld.com



**56. Julie Higgins, Elizabeth Spiro**

\*\* 18a Bellevue Road, SW17 7EG  
Paintings, etchings, enamel pictures, prints and monoprints - framed and unframed. Also silver and enamel jewellery and dishes.  
juliehig@talktalk.net • (020) 8673 3600  
lizspiro@aol.com • (020) 8767 2596



**57. Claire-Jessica Weait**

\*\* 7a Bellevue Road, SW17 7EG  
Colourful, large-scale and often quirky photographic prints that celebrate the lighter side of life.  
www.clairejessica.co.uk • 07887 907 348



**58. Hermione Carline, Phil Dobson, Andrea Ellis, Madeleine Hunter, Andy Preston**

\*\* 44 Brodrick Road, SW17 7DY  
Painting, photography, layered silkscreen and mixed media. Exploring the theme of Chemistry and The Four Elements.  
www.art-atelier.co.uk • (020) 8672 0081



**59. Chrissie Messenger, Carol Grantham, Alex Hosking**

\*\* 42 Wandle Road, SW17 7DW  
Chrissie works in felt and draws with the sewing machine, Carol is a felt-making tutor, and Alex is a portrait painter.



**60. Sally Dunnett (Smartglass) and Concetta Perot (Glittering Shards)**

\*\* Smartglass Studio, c/o Backroom Ltd, 24 Langroyd Road, SW17 7PQ  
All things shimmering! Amazing glass fusion art, jewellery, and hanging decorations alongside gorgeous mosaics for home and garden.  
www.glitteringshards.com • 07960 109 860  
www.smartglass.co.uk • 07958 336 344



**61. Adam Tudor**

\*\* 34 Beechcroft Road, SW17 7BY  
Photographs and paintings of dream-like demolished interiors.  
www.artfullife.co.uk



**62a. Ann Funston, Lesley Martin, Jackie Mwanza**

\*\* 35 Fishponds Road, SW17 7LH  
Colourful stained glass and mosaics, ceramic dogs & cats and other fantastic pieces - commissions for glass panels and dog portraits accepted.  
www.lesleymartin.com • aefunston@talktalk.net  
www.thebatmansmosaic.co.uk



**62b. Valerie Taylor, Louisa Jackson**

\*\* 35 Fishponds Road, SW17 7LH  
Exuberantly coloured felt bags, brooches and other gifts alongside watercolours and oils, large drawings and original prints.  
www.feltdhouse.co.uk  
www.vt-artworks.co.uk • 07720 570 117



**63a. Joanna Close**

\* 44 Foxbourne Road, SW17 8EW  
Joanna uses the medium of felting to bring to life her images. The textural nature of wool is used to create a playful slant on the subject, from cows to abstract.



**63b. Rowena Brown**

\* 44 Foxbourne Road, SW17 8EW  
Rowena shows work exploring the theme of abandoned homes and public places. The stoneware and raku-fired ceramic sculpture evokes a sense of history and fading modernity.



**63c. Liz Emerson**

\* 44 Foxbourne Road, SW17 8EW  
Liz is an exciting new voice in expressionist tapestry, exploring warped geometrics and dynamic curves through a bold sense of colour and visual adventure. She works entirely by hand and produces six pieces a year.



**64. Sue Rowling**

\*\* 98 Drakefield Road, SW17 8RR  
Colourful, contemporary still-life, landscapes and abstracts on paper and canvas. Mono screen prints and print sale.  
www.suerowling.com • (020) 8672 6910



**Get interactive with the artists open house trails!**

Interactive google maps for Wandsworth Central and Balham/Tooting Bec areas have been produced by schoolchildren working with Wandsworth City Learning Centre.

Visit [www.wandsworthclc.org/artistsopenhouse2010](http://www.wandsworthclc.org/artistsopenhouse2010) and download a free application for your internet enabled camera phone.

Swipe the barcodes at selected open houses to find out more about the works on display.



**65. Clive Lavagna**

101 Drakefield Road, SW17 8RS

\*\* 📍

Colourful, dramatic paintings from Venice and Morocco in mixed-media with translucent glazes. Also etchings, linocut and lithograph prints.

[www.clivelavagna.com](http://www.clivelavagna.com) • (020) 8767 0572



Detail

**66. Gill Stockbridge**

\* 📍 38B Ritherdon Road, SW17 8QF

Colourful paintings in oils and acrylics, inspired by large landscapes and small details, and an ongoing interest in water.

[www.GillsArt.co.uk](http://www.GillsArt.co.uk) • (020) 8672 6103



Detail

**67. Jonathan Jackson**

\*\* 📍 19 Netherfield Road, SW17 8AZ

Paintings and pictures in various media, and in a range of styles largely impulsive, expressionistic, and colourful. Imagined structures and environments often feature. Prints and greeting cards of the paintings are also for sale.

[www.jonbjackson.com](http://www.jonbjackson.com) • 07904 779 658



Detail

**68. Nicola Troll**

\*\* 📍 32 Stapleton Road, SW17 8AU

Etchings of atmospheric landscapes and natural abstracts playing with movement, light and colour. Nicola's work captures momentary fleeting drama. Lean about printmaking techniques.

[www.NicolaTrollEtching.co.uk](http://www.NicolaTrollEtching.co.uk)



Detail

**69. Ken McCalla**

\*\* 📍 13 Letchworth Street, SW17 8SX

Garden sculptures, paintings, prints and cards at affordable prices. Artists' presentation at 11.30am each day.

All welcome.

[www.yahwarts.co.uk](http://www.yahwarts.co.uk)



Detail

**70. Brian Sharland**

\*\* 📍 Ground Floor Flat, 273 Franciscan Road, SW17 8HE

A selection of landscape photographs taken in the UK and France as well as local images.

[www.briansharland.co.uk](http://www.briansharland.co.uk)



Detail

**71. Steve Carey**

\* 📍 17 Alston Road, SW17 0TT

Quite a lot of life drawing, a few small paintings, a 'Slice' retrospective and a couple of micro-installations (probably including a Wasp Memorial).

[steve.carey@hisvector.com](mailto:steve.carey@hisvector.com)



Detail

**72. Lucinda Denning, Tom Butler**

\*\* 📍 14 Spalding Road, SW17 9BW

Vibrantly colourful figurative paintings by Lucinda. Atmospheric landscapes, interiors and cityscapes by Tom.

[lucindadenning@btinternet.com](mailto:lucindadenning@btinternet.com)

[twebutler@yahoo.co.uk](mailto:twebutler@yahoo.co.uk)



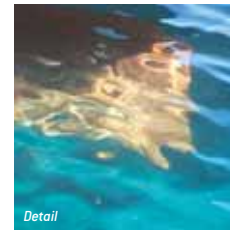
Detail

**73. Julia Court, Katie New, Andy Urwin**

\*\* 📍 5 Gracedale Road, SW16 6SW

Digital photographs subtly altered to focus the senses and mixed media memories of seasons. Silver jewellery using organic forms reflecting the delicate structures of plants. Ceramics shaped like seed pods and pebbles constructed with the detail and precision of Japanese art.

(020) 8769 2308 • 07920 541 125



Detail

**74. Marion Jones, Chris Lessware**

\*\* 📍 84 Ribblesdale Road, SW16 6SE

A wide range of non figurative paintings in oils, acrylics and multi-media.

**75. Caragh Buxton**

\*\* 📍 96 Pretoria Road, SW16 6RN

Children's illustrator and ceramic artist.

Prints, originals, personalised ceramics and greetings cards. Visiting children can paint their own pottery.

[www.etsy.com/shop/Caragh11](http://www.etsy.com/shop/Caragh11)



Detail

**76. Emma Forrester**

\*\* 📍 47 Edencourt Road, SW16 60R

Vivid floral paintings and contemporary still lives executed with a distinctive style.

[www.emmaforrester.co.uk](http://www.emmaforrester.co.uk) • 07771 784 824

**77. Malcolm Franklin**

\*\* 📍 4 Credenhill Street, SW16 6PR

Marble, stone and wood sculptures - along with prints and drawings. A wide range of sizes and prices.

[malcfranklin@hotmail.com](mailto:malcfranklin@hotmail.com)

**78. Fabric Nation, Mandy Treptow, Louise Williams, Cate McCrae**

\*\* 📍 69 Fallsbrook Road, SW16 6DU

Vintage fabrics, fused glasswork, jewellery and photography. Plus crafting workshops!

[www.fabricnation.co.uk](http://www.fabricnation.co.uk)

[www.mandytreptow.com](http://www.mandytreptow.com)

[www.loulouworkshop.etsy.com](http://www.loulouworkshop.etsy.com)

[www.catemcrae.co.uk](http://www.catemcrae.co.uk)



Detail

**Wandsworth Arts grants**

Wandsworth Arts team offers small and project grants to individuals and organisations. The grants support creative arts made in and for the borough.

**For more information:**

[www.wandsworth.gov.uk/artsgrants](http://www.wandsworth.gov.uk/artsgrants)

[arts@wandsworth.gov.uk](mailto:arts@wandsworth.gov.uk) • (020) 8871 8711

### 79. Esam Hamzeh

\*\* 115 Fallsbrook Road, SW16 6DU  
Vibrantly colourful paintings of old buildings in the Middle East plus exotic land and seascapes, nature, animals and children.  
[esamhamzeh@hotmail.com](mailto:esamhamzeh@hotmail.com)  
(020) 8769 4947 • 07958526706



### 80. Amelia Critchlow, Alice Brewer

\*\* 22 Besley Street, SW16 6BD  
Journey into contemporary art and design with stitching, mixed media art, and graphic design including artists' books, an installation and paper-based works. And workshops too!  
[www.ameliacritchlow.co.uk](http://www.ameliacritchlow.co.uk) • 07970 369 517



### 81. Westcote Studios Artists

\* 63a Westcote Road, The Mews, SW16 6BN  
Sculpture, ceramics, furniture, painting, illustration and film making. All this in a very interesting setting.  
[www.infestedheads.co.uk](http://www.infestedheads.co.uk)  
[www.DavidPearceart.com](http://www.DavidPearceart.com)  
[www.StephenStockbridge.com](http://www.StephenStockbridge.com)



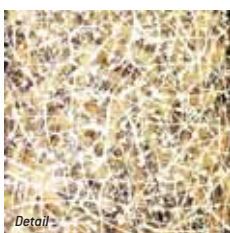
### 82. Ilana Richardson

\*\* The Coach House, 175 Ramsden Road, SW12 8RF  
The intense light and heat of the Mediterranean are captured beautifully in paintings, which draw the viewer in to scenes from Greece, Italy, France and Kerala.  
Ilana undertakes special commissions of homes and gardens in the UK and abroad.  
Come and watch Ilana create a painting 2-4pm each day.  
[art@ilana-richardson.com](mailto:art@ilana-richardson.com)  
[www.ilana-richardson.com](http://www.ilana-richardson.com)  
(020) 8673 3111



### 83. Wolfgang Günther

\* 28 Alderbrook Road, SW12 8AE  
Drip-art or action painting work - mostly enamel on canvas, abstract paintings inspired by Jackson Pollock.  
[www.kunst234.co.uk](http://www.kunst234.co.uk) • 07710 899 289



### 84. Linda Samson

\*\* Ground Floor, 78a Broomwood Road, SW11 6LA  
Colourful, decorative ceramics, oil paintings, watercolours and mixed media, drawings, etchings and lithographs. Mainly figurative and based on memories, dreams and poetry.



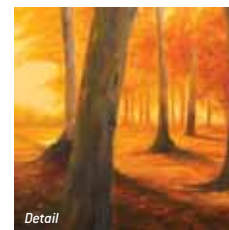
### 85. Louise Gillard, Victoria Jardine

\*\* 141c Chatham Road, SW11 6HJ  
The local area represented in paint, etching, collograph and mixed media. Handbuilt ceramic vessels fuse a machine aesthetic with African tradition.  
[www.louisegillardart.com](http://www.louisegillardart.com) • 07789 278 849  
[www.victoriajardine.com](http://www.victoriajardine.com) • (020) 7223 3075



### 86. Marielle Albers

\* 146 Leathwaite Road, SW11 6RP  
Oil paintings of landscapes and figures in colourful settings with a dream-like quality.  
[www.mariellealbers.com](http://www.mariellealbers.com)  
07909 967880



### 87. Penny Glidewell

\* 10 Kelmscott Road, SW11 6QY  
An exploration of mountain and urban landscapes in colour and texture. Paintings and collagraph prints.  
[www.pennyglidewellpaintings.co.uk](http://www.pennyglidewellpaintings.co.uk)



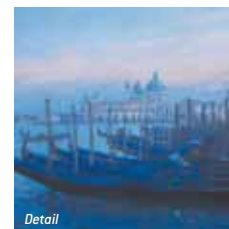
### 88. David Beresford, Lucia Bartlett, Kirsty Walker, Julius Honnor, Catherine Marche

\*\* 62 Mallinson Road, SW11 1BP  
An artistic menagerie of photographs, jewellery, paintings, ceramics and digital media.  
[www.chigwiri.com](http://www.chigwiri.com) • 07725 545 968



### 89. Duncan Harris

\*\* 6 Lavender Sweep, SW11 1HA  
Vibrant, European landscapes influenced by the impressionists.  
[www.duncanharris.biz](http://www.duncanharris.biz) • (020) 7738 2851



### 90. Rosemarie Gwilliam

\*\* 85 Grayshott Road, SW11 5UB Entrance via green side door on Kingsley Street.  
New work from a recent trip to Abruzzo, Italy. Pastels, oils, watercolours, portraits, life drawings and theatre designs.  
(020) 7738 2072



### 91. Clare Frankl, Penny Roberts, Cordelia Ellis

\*\* 1 Kite Yard, Cambridge Road, SW11 4TA  
Two potters and a printmaker who enjoy working with fire and acid. Experimental and functional ceramics and etchings reflecting landscape themes from mountains to foreshore.




Join a group walk around some of the open house trails – discover new places and meet new people!



There are two walks to choose from on Sundays 3rd and 10th October and each will last around two hours.

- Wandsworth Common area – meet 11am at Crummet, 66 Northcote Road, SW11 6QL – map reference K
- Tooting Bec area – meet 3pm at Sprout Arts, 74 Moyser Road, Furzedown, SW16 6SQ – map reference L

You are advised to register your place. Contact: [jharvey1@wandsworth.gov.uk](mailto:jharvey1@wandsworth.gov.uk) or call 020 8871 8377



**Black History Month 2010**  
4-30 October

THE BRIGHTER BORDER  
Wandsworth

[www.wandsworth.gov.uk/libraries](http://www.wandsworth.gov.uk/libraries)

**Jackson's**  
ART SUPPLIES

Under the arches at Putney Bridge tube station you will find a huge selection of the worlds finest Artist's materials and equipment at London's lowest prices.

**We stock:** Old Holland, Michael Harding, Block, Winsor & Newton, Sennelier, Holban, Daler Rowney, Schmincke, Maimeri, Rembrandt, Lukas, Golden, Montana, Pebeo, Darwent, Faber, Pro Arte, Davinci, Mafel, Unison and many more well known and own brand products... All at discounted prices, with further offers and reductions available in store.



Whether you are a beginner seeking guidance, a professional with a technical question, or somebody seeking inspiration for a gift, come and visit us under the arches, next to Putney Bridge Station, where our friendly and knowledgeable staff will happily advise you.

**020 7384 3055** Arch 66/67, Putney Bridge, Station Approach, Fulham, SW6 3UH



**CREATIVE COURSES**

Putney School of Art & Design

**BEGINNERS AND ADVANCED PART-TIME COURSES IN**

- Painting
- Life Drawing
- Digital Photography
- Web Design
- Pottery
- Printmaking
- Portrait
- Watercolour
- Digital Design and much more




For more information  
(020) 8788 9145  
[putneyschoolartanddesign@wandsworth.gov.uk](mailto:putneyschoolartanddesign@wandsworth.gov.uk)  
[www.wandsworth.gov.uk/psad](http://www.wandsworth.gov.uk/psad)

THE BRIGHTER BORDER  
Wandsworth

**Lambeth open** Saturday 2nd & Sunday 3rd October 2010 10am to 6pm



South London artists and crafts people open their doors  
For the latest map of all participating venues visit the web site  
**[www.lambethopen.com](http://www.lambethopen.com)**

If you have difficulty understanding this in English, please contact:  
Wandsworth Interpreting Service: (020) 8871 5751 English

إذا واجهت صعوبة في فهمه باللغة الإنجليزية، فيرجى الاتصال بـ:  
Wandsworth Interpreting Service: (020) 8871 5751 Arabic

যদি আপনার এটি ইংরেজিতে বুঝতে অসুবিধা হয় তাহলে অনুগ্রহ করে এখানে যোগাযোগ করুন:  
Wandsworth Interpreting Service (020) 8871 5751 Bengali

如果你看不懂英文版，請聯繫：  
Wandsworth Interpreting Service: (020) 8871 5751 Chinese

Si vous avez des difficultés à comprendre ce texte en anglais, veuillez contacter:  
Wandsworth Interpreting Service (020) 8871 5751 French

અગર તે અંગ્રેજીમાં સમજવા મુશ્કેલ લાગે તો મુલાકાતી કરીને  
Wandsworth Interpreting Service: (020) 8871 5751 પર સંપર્ક કરો. Gujarati

W razie problemów ze zrozumieniem tekstu w języku angielskim prosimy o kontakt z: Wandsworth Interpreting Service: (020) 8871 5751 Polish

Se tem dificuldades em compreender isto em Inglês, por favor, contacte: Wandsworth Interpreting Service: (020) 8871 5751 Portuguese

Hadday kugu adag tahay inaad ku fahamto Ingriis fadlan la xiriiir:  
Wandsworth Interpreting Service: (020) 8871 5751 Somali

Si tiene dificultad para entenderlo en inglés favor contactar a:  
Wandsworth Interpreting Service: (020) 8871 5751 Spanish

இதை ஆங்கிலத்தில் புரிந்துகொள்வதில் சிரமம் இருந்தால் நீங்கள் தொடர்புகொள்ள வேண்டியது:  
Wandsworth Interpreting Service: (020) 8871 5751 Tamil

اگر آپ کو انگریزی میں اسے سمجھنے میں دشواری کا سامنا ہو تو براہ کرم رابطہ کریں:  
Wandsworth Interpreting Service: (020) 8871 5751 Urdu